

**SERVICE MANUAL
&
PARTS LIST**

MODEL: Jubilee 60507

CONTENTS

What to do when.....	1 - 3
Service Access (1) Face plate.....	4
Service Access (2) Base cover.....	5
Service Access (3) Front cover.....	6
Service Access (4) Rear cover.....	7
Adjusting Thread Tension	8
Adjusting Presser Foot Height and Alignment.....	9
Adjusting Needle Swing.....	10
Adjusting Needle Drop Position	11
Adjusting Needle to Hook Timing	12
Adjusting Needle Bar Height	13
Adjusting Clearance between Needle and Hook Point.....	14
Adjusting Backlash between Hook Drive Gear and Lower Shaft Gear.....	15
Adjusting Feed Dog Height.....	16
Adjusting Feed Balance.....	17
Adjusting Buttonhole Feed Balance	18
Adjusting Buttonhole Zero Feed	19
Replacing Motor and Adjusting Motor Belt Tension	20
PARTS LIST	21 - 41

What to do when

CONDITION	CAUSE	HOW TO FIX	REFERENCE
1. Skipping stitches	<ol style="list-style-type: none"> 1. Needle is not inserted properly. 2. Needle is bent or worn. 3. Incorrectly threaded. 4. Needle or thread are inappropriate for fabric being sewn. 5. Sewing on stretch fabric. 6. Presser foot pressure is too weak. 7. Inappropriate needle bar height. 8. Inappropriate needle to hook timing. 9. Inappropriate needle to hook clearance. 	<p>Insert the needle properly.</p> <p>Change the needle.</p> <p>Rethread.</p> <p>Use the recommended sewing needle and thread.</p> <p>Use a #11 blue tip needle.</p> <p>Adjust the presser bar level to make the pressure stronger.</p> <p>See mechanical adjustment "Needle Bar Height".</p> <p>See mechanical adjustment "Needle to Hook Timing".</p> <p>See mechanical adjustment "Clearance between Needle and Hook Point"</p>	<p>P.13</p> <p>P.12</p> <p>P.14</p>
2. Fabric not moving	<ol style="list-style-type: none"> 1. Presser foot pressure is too weak. 2. Incorrect feed dog height. 3. Feed dog is in down position. 4. Thread on bottom side of fabric is jammed up. 5. Feed dog teeth are worn. 	<p>Adjust the presser bar level to make the pressure stronger.</p> <p>See mechanical adjustment "Feed Dog Height."</p> <p>Raise the feed dog level.</p> <p>Make sure to bring both needle and bobbin thread under the foot when starting sewing.</p> <p>Change the feed dog.</p>	<p>P.16</p>

CONDITION	CAUSE	HOW TO FIX	REFERENCE
3. Breaking upper thread	<ol style="list-style-type: none"> 1. Initial sewing speed is too fast. 2. Thread path is incorrect. 3. Needle is bent or worn. 4. Upper thread tension is too strong. 5. Needle size is inappropriate for fabric. 6. Needle eye is worn. 7. Needle hole in needle plate is worn or burred. 	<p>Start with medium speed.</p> <p>Use the proper thread path.</p> <p>Replace with a new needle.</p> <p>Adjust the upper thread tension correctly.</p> <p>Use appropriate needle for fabric and thread in use.</p> <p>Change the needle.</p> <p>Repair the hole or replace the needle plate.</p>	P.8
4. Breaking bobbin thread	<ol style="list-style-type: none"> 1. Incorrectly threaded bobbin. 2. Too much thread is around on the bobbin. 3. Lint is stuck inside the bobbin holder. 4. Thread quality is too low. 5. Thread is jamming around the bobbin. 	<p>Thread bobbin correctly.</p> <p>Adjust the position of bobbin winder stopper.</p> <p>Clean the shuttle.</p> <p>Change to a high quality sewing thread.</p> <p>Remove the jamming thread.</p>	
5. Needle breaks	<ol style="list-style-type: none"> 1. Needle is hitting the needle plate. 2. Needle is bent or worn. 3. Needle is hitting the shuttle. 4. The fabric moves while the needle is piercing it, or the needle zigzags while in fabric. 5. Fabric is being pulled too strongly while sewing. 	<p>See mechanical adjustment "Needle Drop Position."</p> <p>Change the needle.</p> <p>See mechanical adjustment "Needle clearance to shuttle."</p> <p>See mechanical adjustment "Needle Swing."</p> <p>Guide the fabric gently while sewing.</p>	<p>P.11</p> <p>P.14</p> <p>P.10</p>

CONDITION	CAUSE	HOW TO FIX	REFERENCE
6. Noisy operation	1. Backlash between Shuttle hook gear and lower shaft gear is too great.	See mechanical adjustment "Backlash (lower shaft gear)."	P.15
	2. Lower shaft gear is loose.	Eliminate the looseness.	
	3. Inappropriate belt tension.	See mechanical adjustment "Motor belt tension."	P.20
	4. Not enough oil	Oil all moving parts.	
	5. Upper shaft is loose	Eliminate the looseness	
7. Deformation pattern	1. Inappropriate feed balance.	See mechanical adjustment "Stretch stitch balance."	P.17
	2. Inappropriate zigzag synchronization.	See mechanical adjustment "Needle Swing."	P.10
	3. Upper thread tension is too strong.	See mechanical Adjustment "Top tension."	
8. Improper	1. Buttonhole stitch balance is not correct.	See mechanical adjustment "Buttonhole stitch balance."	P.18, 19

Service Access (1)

- Face plate

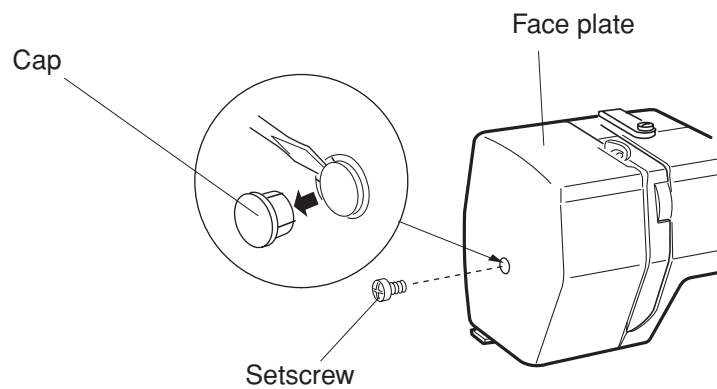
<To remove>

Remove the cap and setscrew. Remove the face plate.

<To attach>

Attach the face plate with the setscrew.

Attach the cap.



Service Access (2)

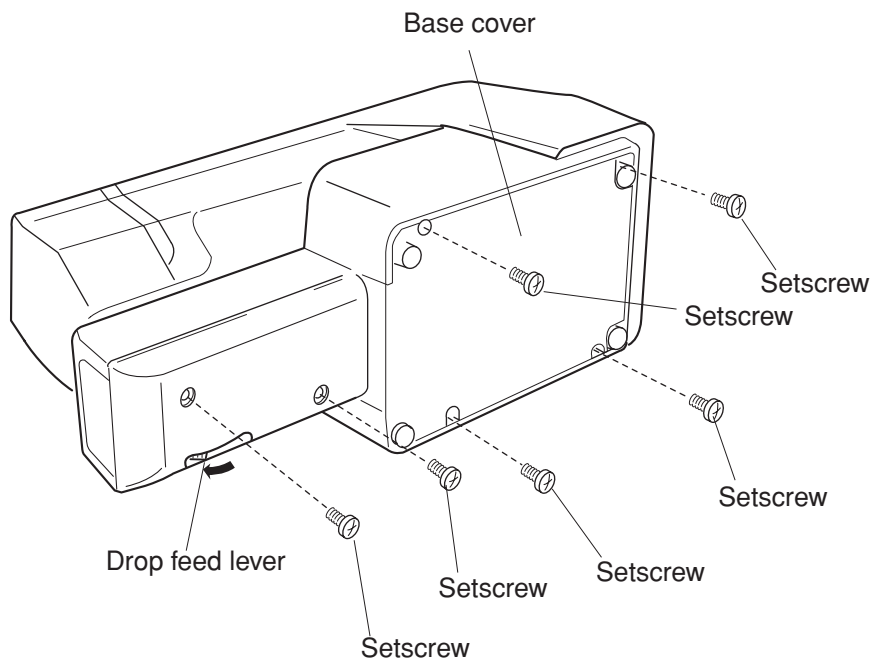
- Base cover

<To remove>

Remove the setscrews (6 pcs.) and remove the base cover.

<To attach>

Shift the drop feed lever in the direction of the arrow. Attach the base cover with setscrews.



Service Access (3)

- Front cover

<To remove>

Remove the face plate and base cover (see pages 4 and 5).

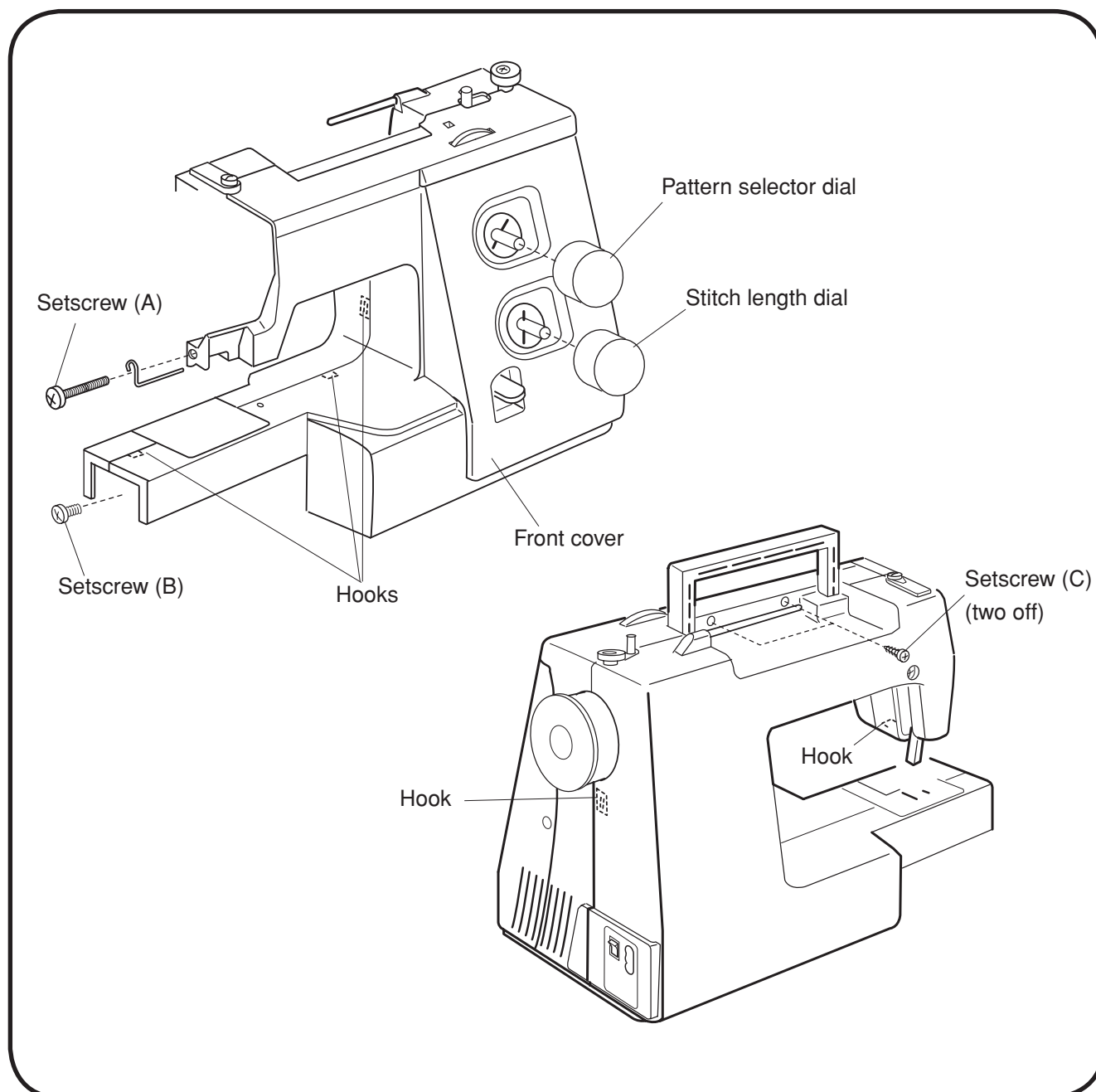
Pull out the pattern selector dial and stitch length dial.

Remove the setscrews (A), (B) and (C) (two off).

Remove the front cover, unlocking all the hooks.

<To attach>

Follow the above procedure in reverse.



Service Access (4)

• Rear cover

<To remove>

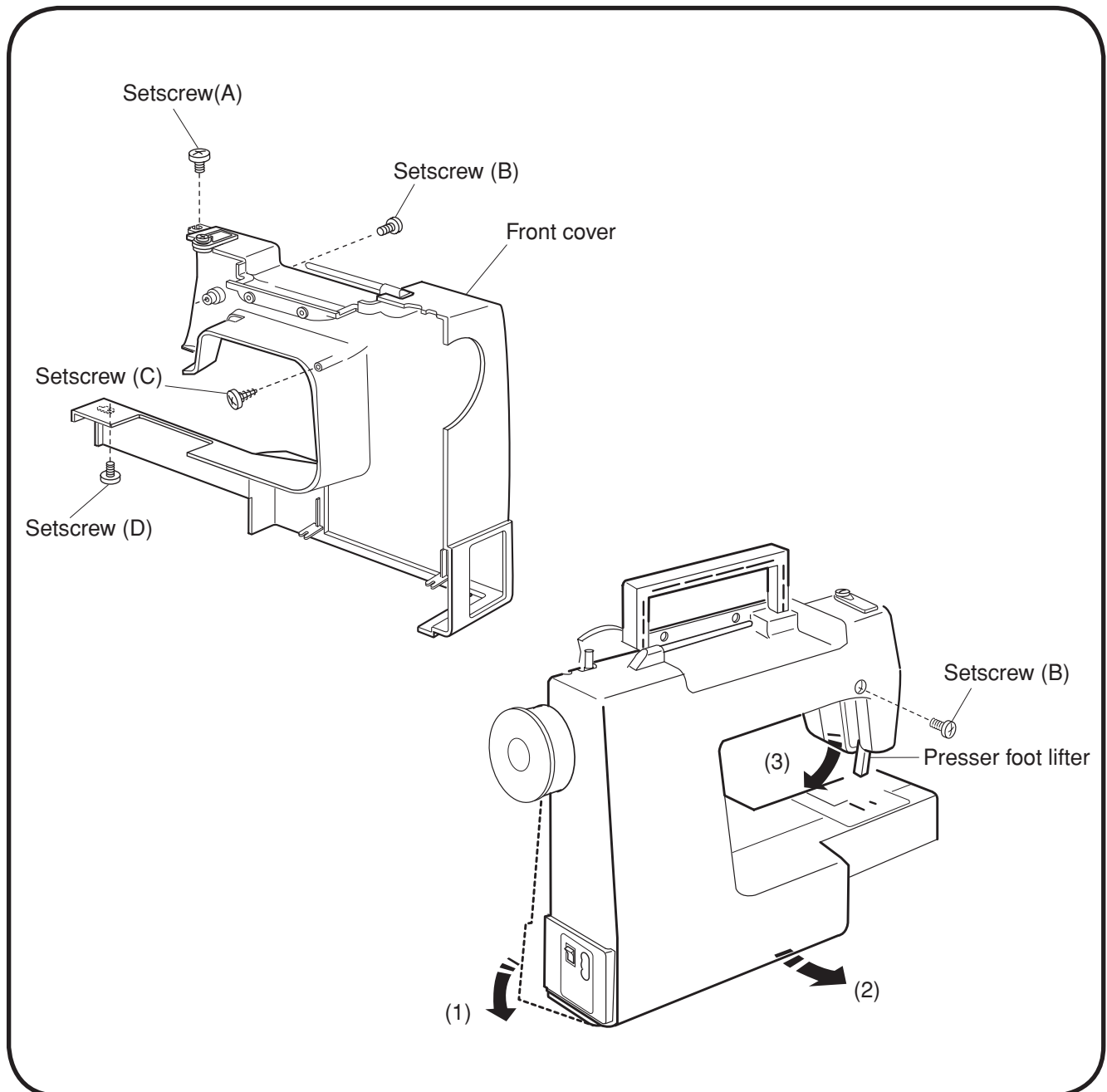
Remove the face plate, base cover and front cover (see pages 4 and 6).

Remove the setscrews (A), (B), (C) and (D).

Lower the presser foot lifter and pull away the rear cover from the machine, clearing the parts(1), (2) and (3), in this order.

<To attach>

Follow the above procedure in reverse.



Adjusting Thread Tension

- The standard tension should be 75 - 90 grams measured with a white polyester thread #50 being pulled in the direction of the arrow, when the tension dial is set at "4".

<To adjust>

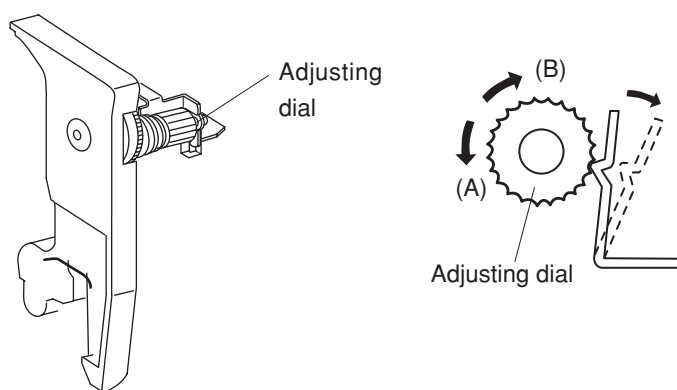
Remove the front cover (see page 6).

Set the tension dial at "4".

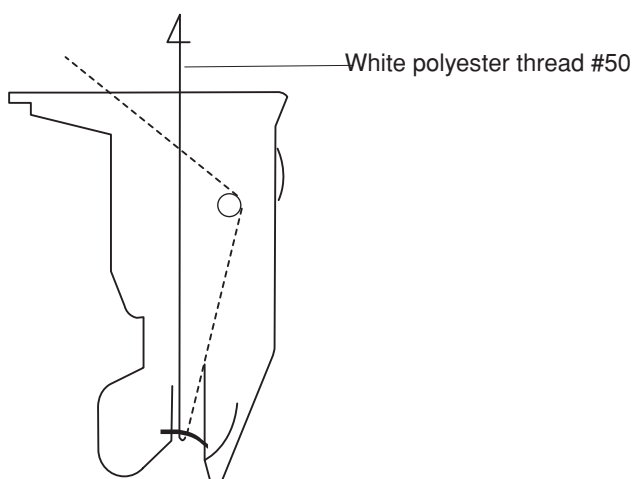
If the tension is too tight, turn the adjusting dial in the direction (A).

If the tension is too loose, turn the adjusting dial in the direction (B).

Check the tension again and attach the front cover.



Pull the thread in this direction at approx.
110 mm per second.



Adjusting Presser Foot Height and Alignment

- The distance between the bottom of the presser foot in up position and the needle plate should be 6.0 mm.

<To adjust>

Remove the face plate and needle.

Lower the feed dog below the needle plate. Place a block 6 mm thick under the presser foot and lower the presser foot lifter.

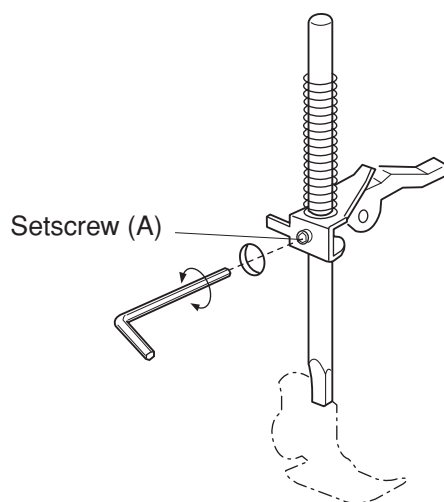
Loosen the setscrew (A). Raise the presser foot lifter and tighten the setscrew (A) firmly.

Attach the needle and face plate.

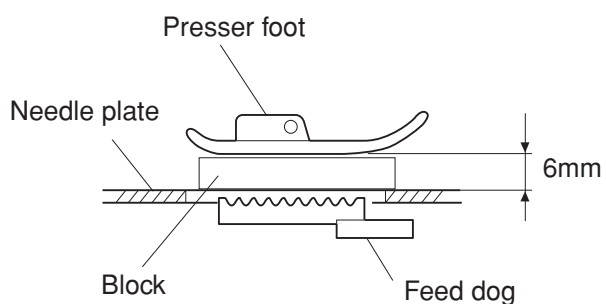
Attach the face plate.

NOTE:

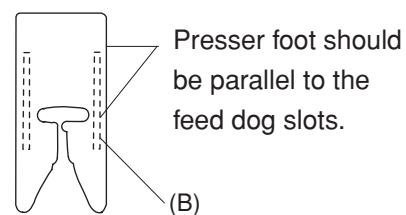
Make sure that the presser foot should be parallel to the feed dog slots (B) in the needle plate.



Presser foot height



Presser foot alignment



Adjusting Needle Swing

- If the needle swing when it is still in the fabric, correct it as follows.

<To adjust>

Remove the front cover (see page 6).

Select the zigzag stitch () and set the stitch width dial at 5.0.

Loosen the setscrews on the worm.

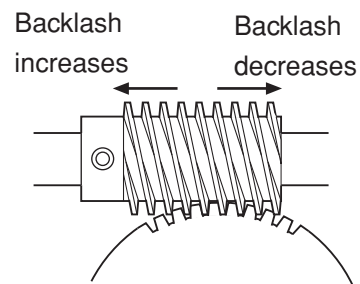
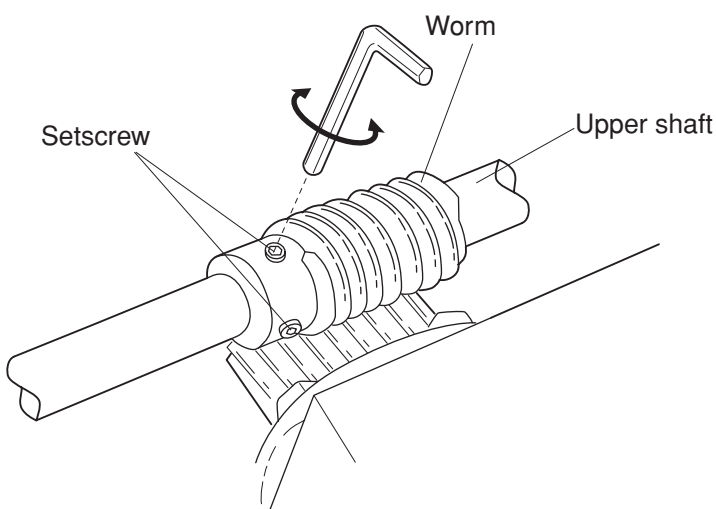
While holding the worm as not to rotate, turn the handwheel to adjust the needle bar swing so that the needle starts to swing 2 - 3 mm above the needle plate in the right outflow.

Tighten the setscrews on the worm securely.

Attach the front cover.

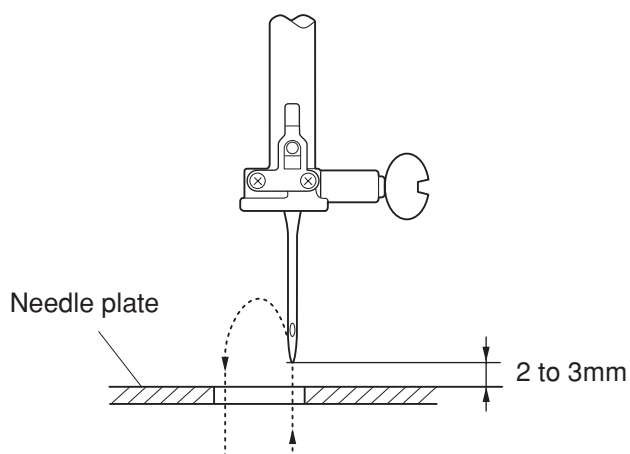
NOTE:

The upper shaft should turn smoothly without an excessive backlash between the worm and gear.




NOTE:

Make sure the worm does not move sideways when turning the handwheel, otherwise the backlash will change.




Adjusting Needle Drop Position

- The clearance between the needle and side edges of the needle hole should be 0.2 mm or more when the maximum width zigzag stitch () is select. And the needle should drop in the center of the needle hole when the straight stitch is selected.


<To adjust>

Remove the face plate (see page 4).

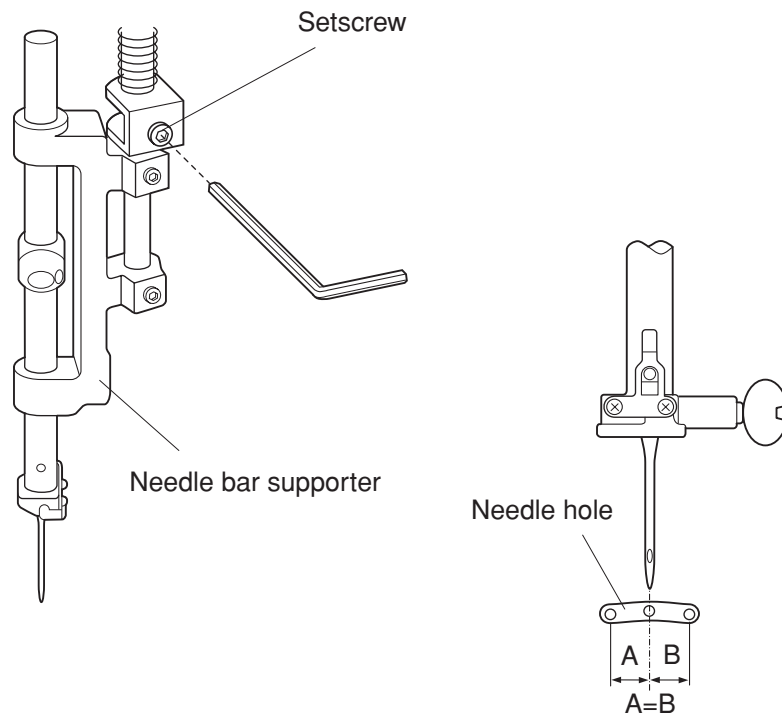
Select the straight stitch ().

Loosen the setscrew.


Move the needle bar supporter so that the needle drops in the center of the needle hole. Tighten the setscrew.

Select the zigzag stitch () and set the stitch width dial at 5.0 to check the clearance between needle and side edges of the needle hole.

Attach the face plate.



Adjusting Needle to Hook Timing

- The amount of ascending travel of the needle in the maximum width zigzag stitch () from the right lowest position should be 1.4 to 2.0 mm where the hook point meets the right side of the needle.

<To adjust>

Select the maximum width zigzag stitch ().

Remove the base cover (see page 5).

Remove the needle plate and bobbin holder.

Loosen the setscrews on the lower shaft gear.

Turn the handwheel toward you to bring the needle to the right lowest position. Then raise the needle 1.7mm from the lowest position.

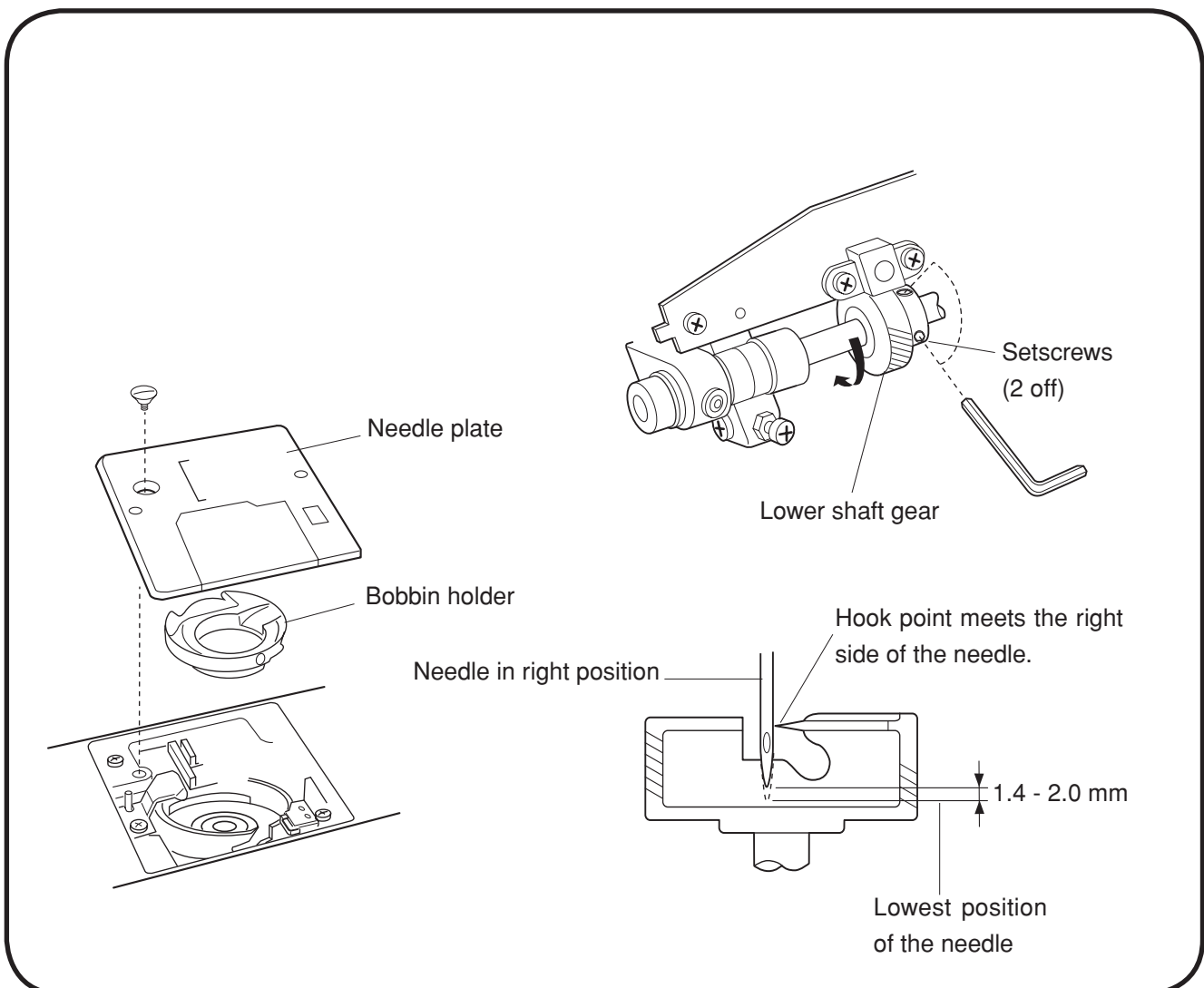
While holding the handwheel as not to move the needle bar, rotate the hook race until the hook point meets the right side of the needle.

Tighten the setscrews.


Attach the bobbin holder and needle plate.

Attach the base cover.


Note: Before performing this adjustment, be sure to check the needle bar height.



Adjusting Needle Bar Height

- The standard distance between the upper edge of the needle eye and the upper surface of the hook race should be in the range of 3.0 - 3.6 mm when the hook point meets the right side of the needle in its ascending travel from the right lowest position of the maximum width zigzag stitch ().

<To adjust>

Select the maximum width zigzag stitch () and bring the needle to the right lowest position.

Remove the face plate (see page 4).

Remove the needle plate and bobbin holder.

Turn the handwheel toward you until the hook point meets the right side of the needle.

Loosen the setscrew and move the needle bar up or down to adjust the needle bar height.

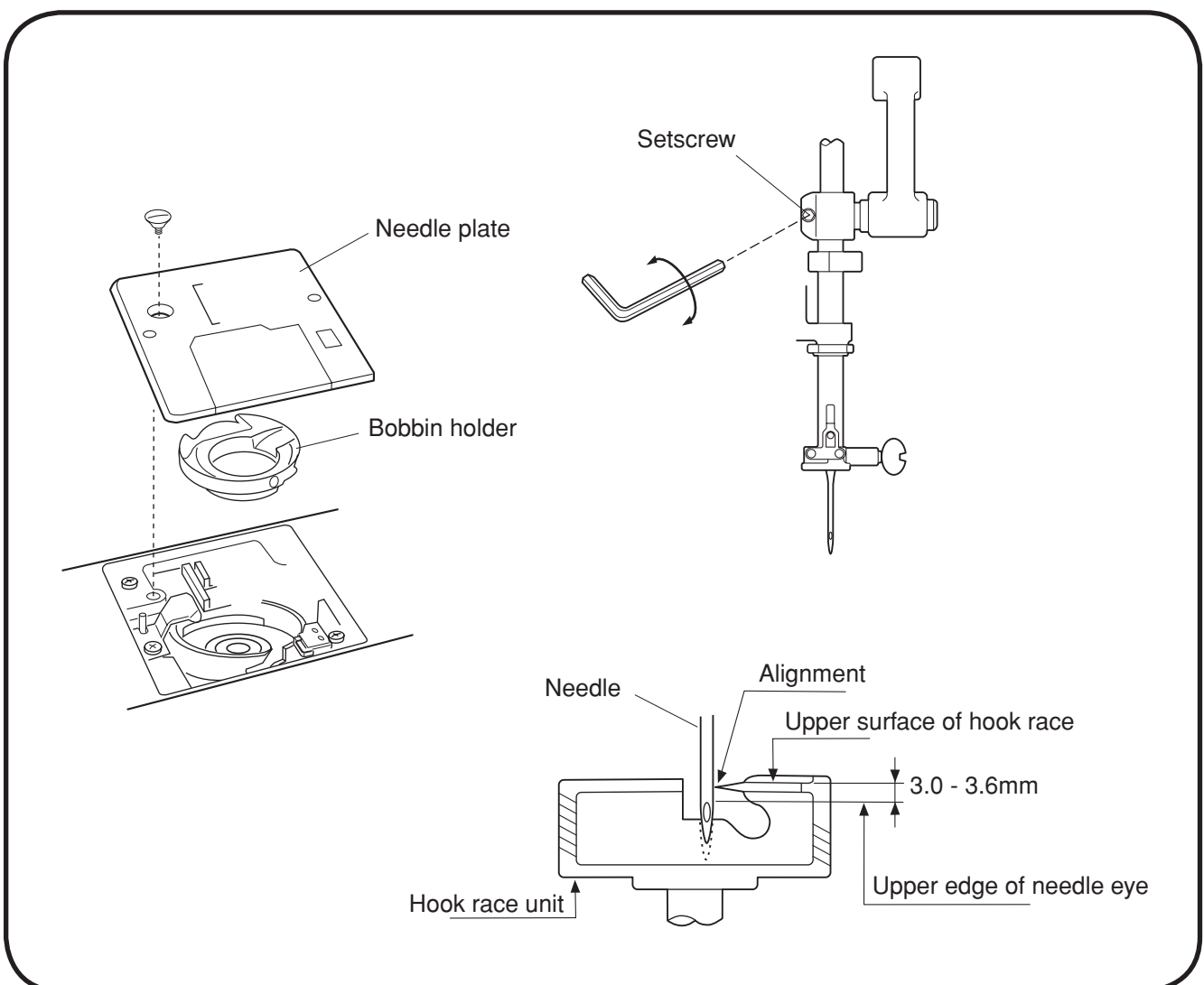
Note: Be careful not to rotate the needle bar.

Tighten the setscrew.

Attach the bobbin holder, needle plate and face plate.

NOTE:

Before performing this adjustment, check the needle to hook timing.



Adjusting Clearance between Needle and Hook Point

- The standard clearance between the needle and hook point should be -0.10 to $+0.05$ mm.

<To adjust>

Select the maximum width zigzag stitch ().

Remove the base cover (see page 5). Remove the needle plate and bobbin holder.

Replace the needle with the test pin. Loosen the setscrews (B) and (C). Slightly loosen the setscrew (A).

Turn the handwheel toward you to bring the hook point behind the test pin.

Adjust the clearance to -0.1 to $+0.05$ mm by moving the hook base plate up or down.

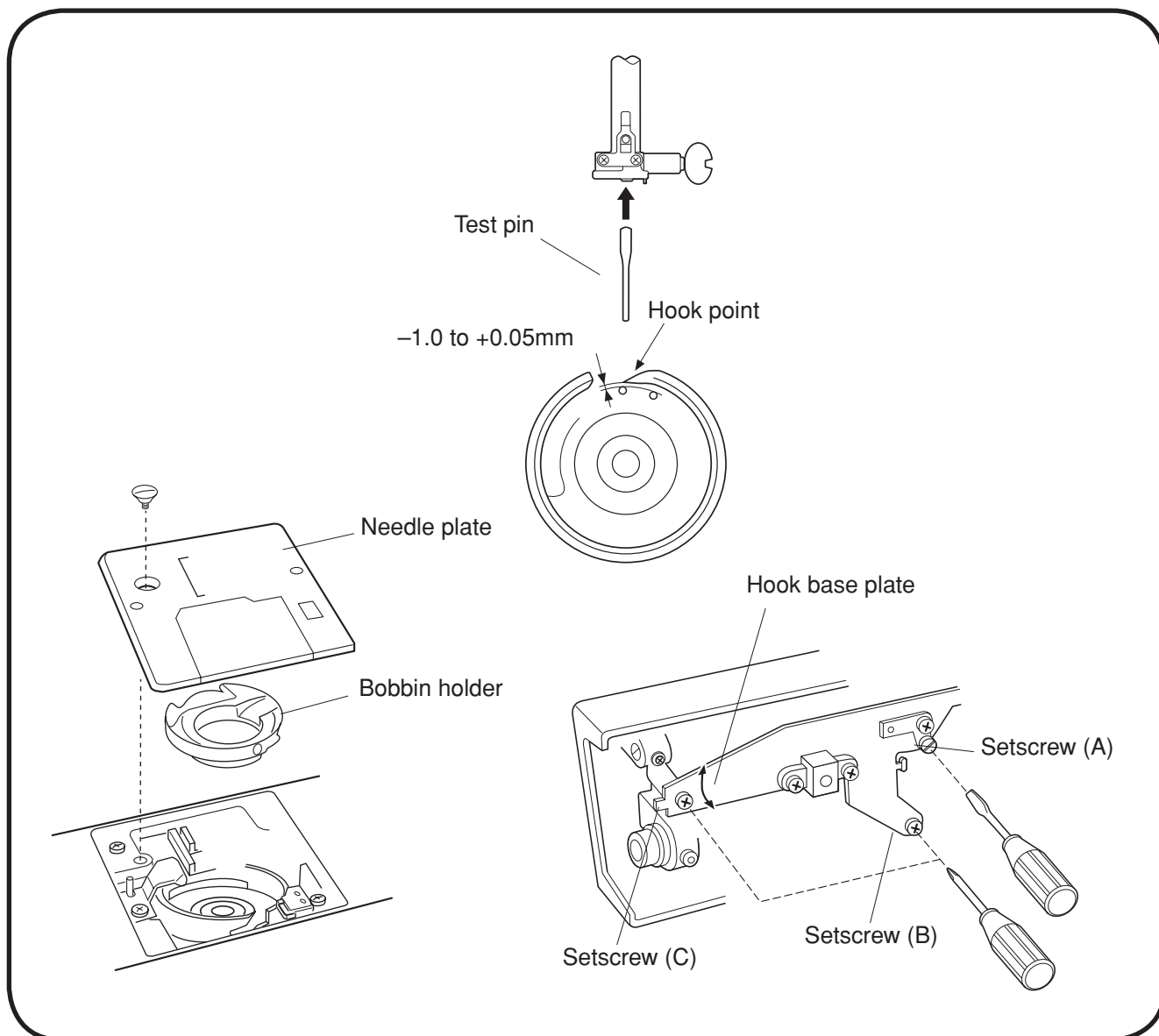
Tighten the setscrews (A), (B) and (C) securely.

Check the backlash of the hook drive gear and lower shaft gear.

Note: Adjust the backlash if necessary (see page 15).

Attach the base cover.

Replace the test pin with the needle. Attach the bobbin holder and needle plate.



Adjusting Backlash between Hook Drive Gear and Lower Shaft Gear

- The rotary play should be 0.8 mm or less when the hook point is within the span of the feed dog, and the gears should turn smoothly.

<To adjust>

Remove the base cover (see page 5).

Loosen the setscrews.

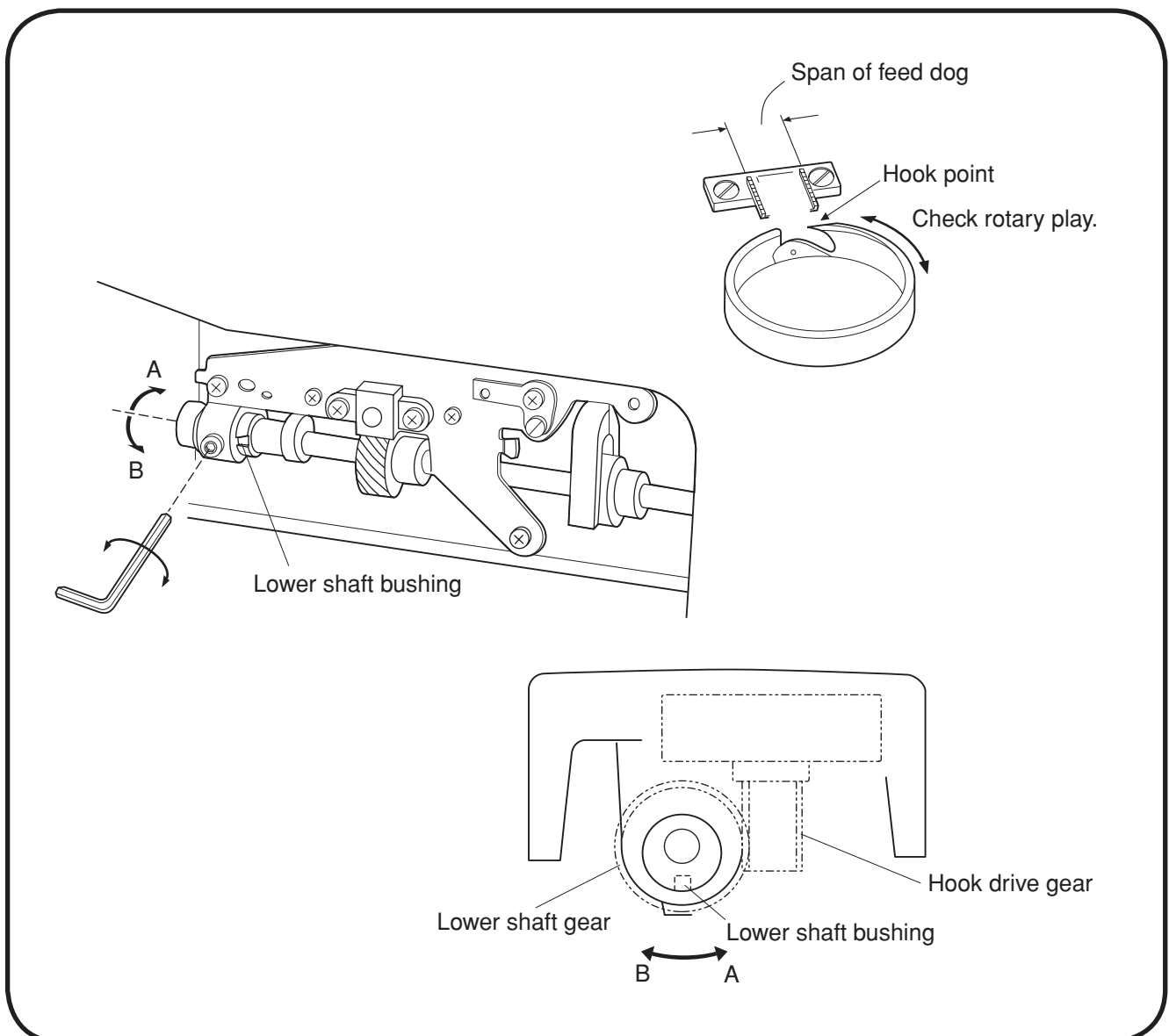
If the backlash is too big, turn the lower shaft bushing in the direction (B).

If the gear engagement is too tight, turn the lower shaft bushing in the direction (A).

Tighten the setscrews and attach the base cover.

NOTE:


Be sure to check and adjust the needle to hook timing and feed dog height if necessary, after performing this adjustment.



Adjusting Feed Dog Height

- The distance between the lowered presser foot and needle plate should be 0.75 to 0.85 mm when the feed dog is in its highest position.

<To adjust>

Select the straight stitch () and set the stitch width at "4".

Lower the presser foot. Turn the handwheel to bring the feed dog to its highest position.

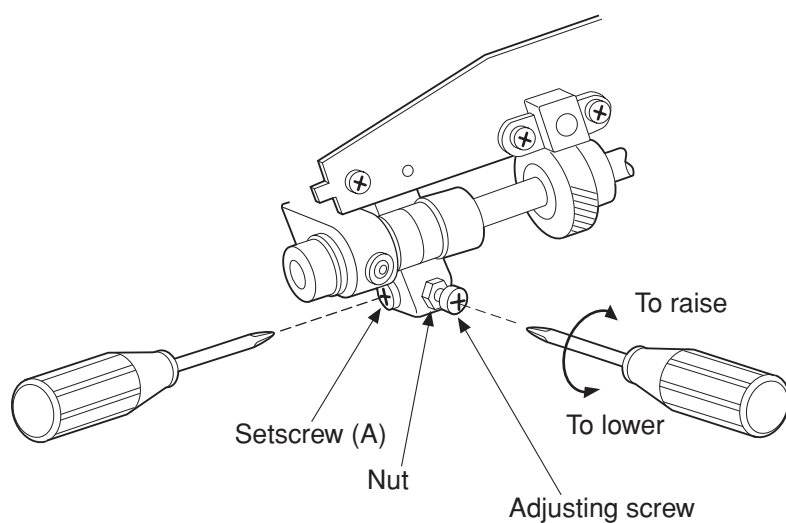
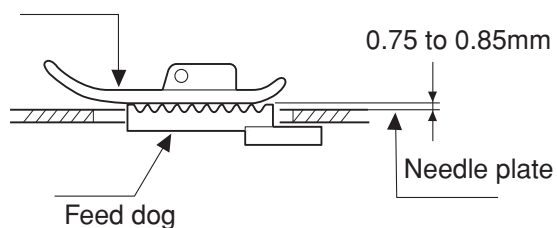
Remove the base cover (see page 5).

Loosen the setscrew (A) and nut.

Turn the adjusting screw to set the feed dog height to 0.75 to 0.85 mm.

Tighten the nut and setscrew (A).


Attach the base cover.



Adjusting Feed Balance

The forward feeding (A) and backward feeding (B) should be equal when sewing stretch stitch pattern.

<To adjust>

Select the straight stretch stitch ().

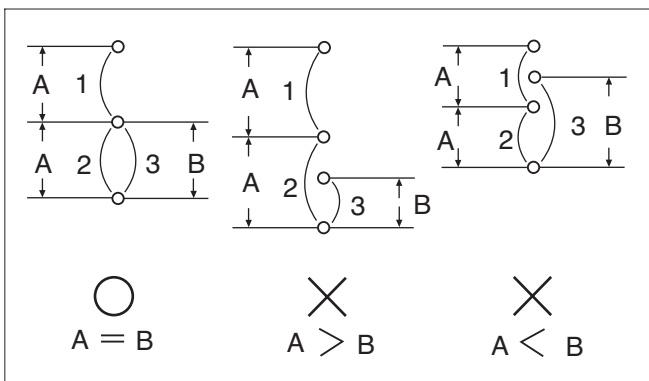
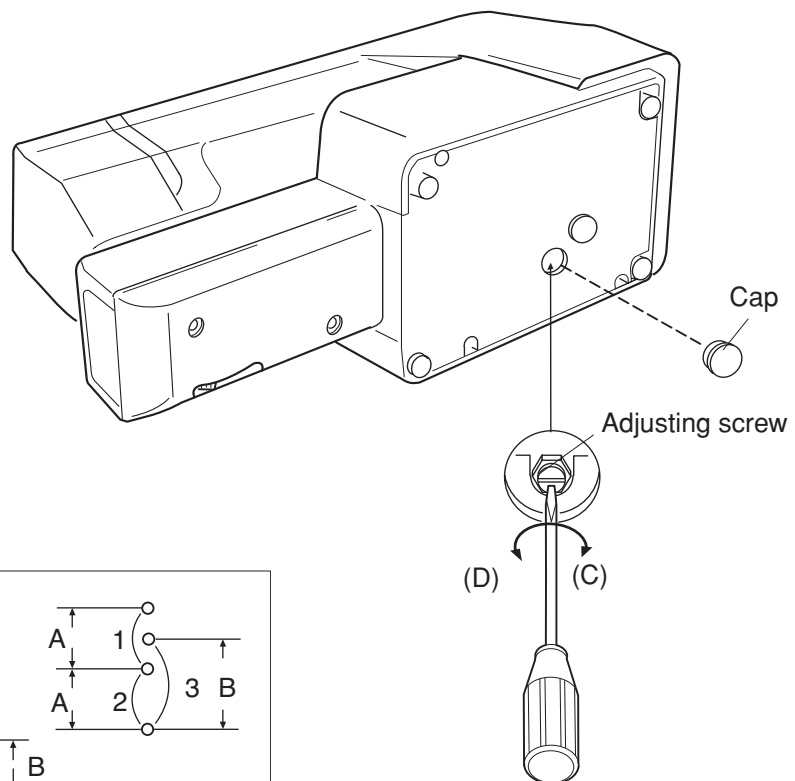
Place a piece of paper under the foot. Turn the handwheel to check the needle marks.

Remove the cap to access the adjusting screw.

If the forward feeding (A) is longer than backward feeding (B), turn the adjusting screw in the direction (C).

If the forward feeding (A) is shorter than backward feeding (B), turn the adjusting screw in the direction (D).

Attach the cap.



Adjusting Buttonhole Feed Balance

- When sewing a buttonhole, the stitches on each side of the buttonhole should be the same density.

The range of 9 to 12 stitches in the right side row against 10 stitches in the left side row is considered acceptable.

<To adjust>

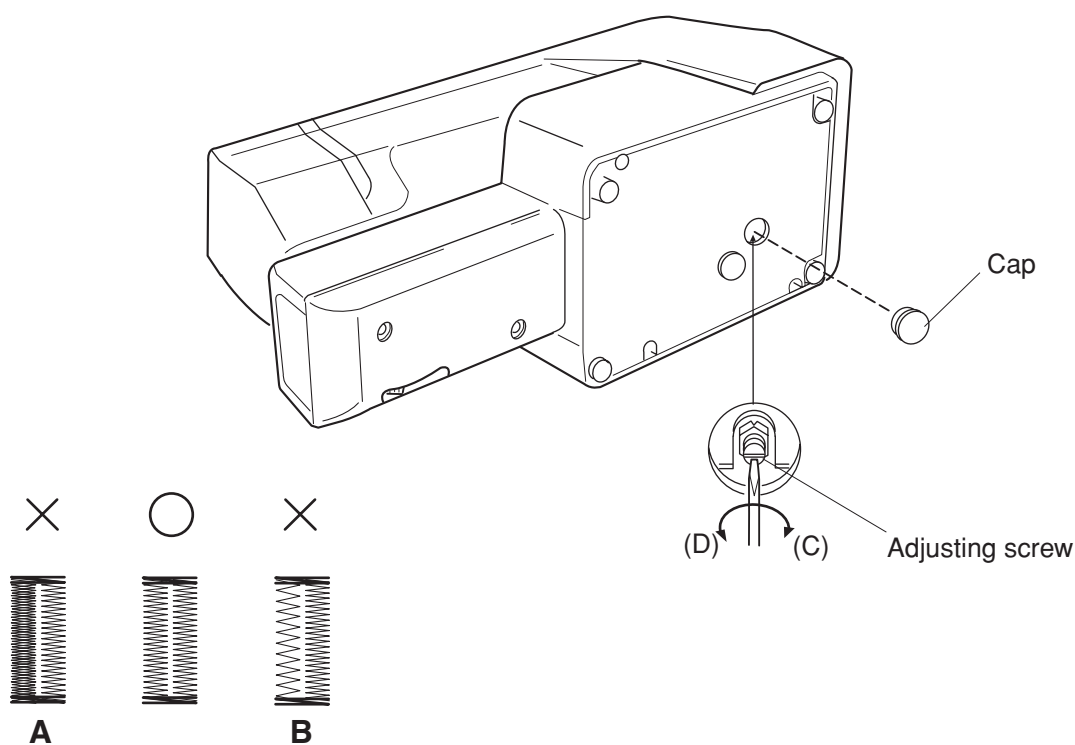
Sew a test buttonhole and count the stitches on each side.

Remove the cap to access the adjusting screw.

If the left row is denser (A), turn the adjusting screw in the direction (C).

If the right row is denser (B), turn the adjusting screw in the direction (D).

Attach the cap.



Adjusting Buttonhole Zero Feed

- If the fabric is fed when sewing a bartack of the buttonhole, correct it as follows:

<To adjust>

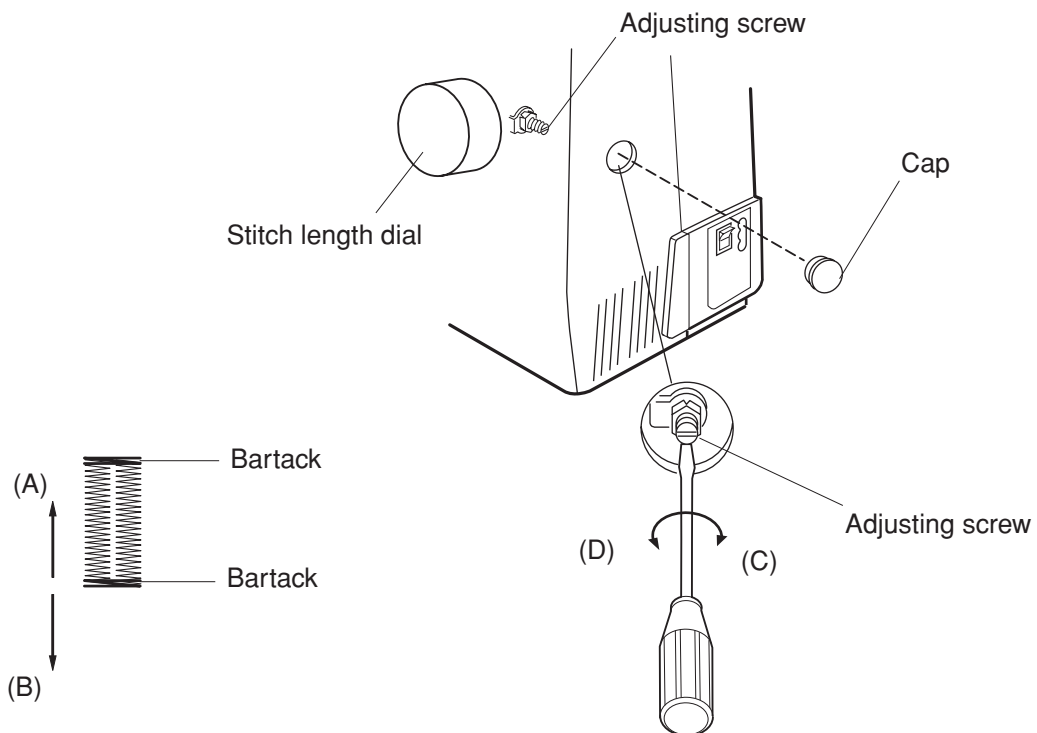
Sew a test buttonhole to check if the fabric is fed while sewing the bartacks.

Remove the cap to access the adjusting screw.

If the fabric is fed forward (A), turn the adjusting screw in the direction (C).

If the fabric is fed backward (B), turn the adjusting screw in the direction (D).

Attach the cap.



Replacing Motor and Adjusting Motor Belt Tension

<To replace the motor>

Remove the face plate, base cover, front cover and rear cover (see pages 4 to 7).

Remove the setscrews (A) and machine socket. Remove the setscrews (B) and machine socket lid.

Remove the nuts and disconnect the motor cords.

Remove the setscrews (C) and motor.

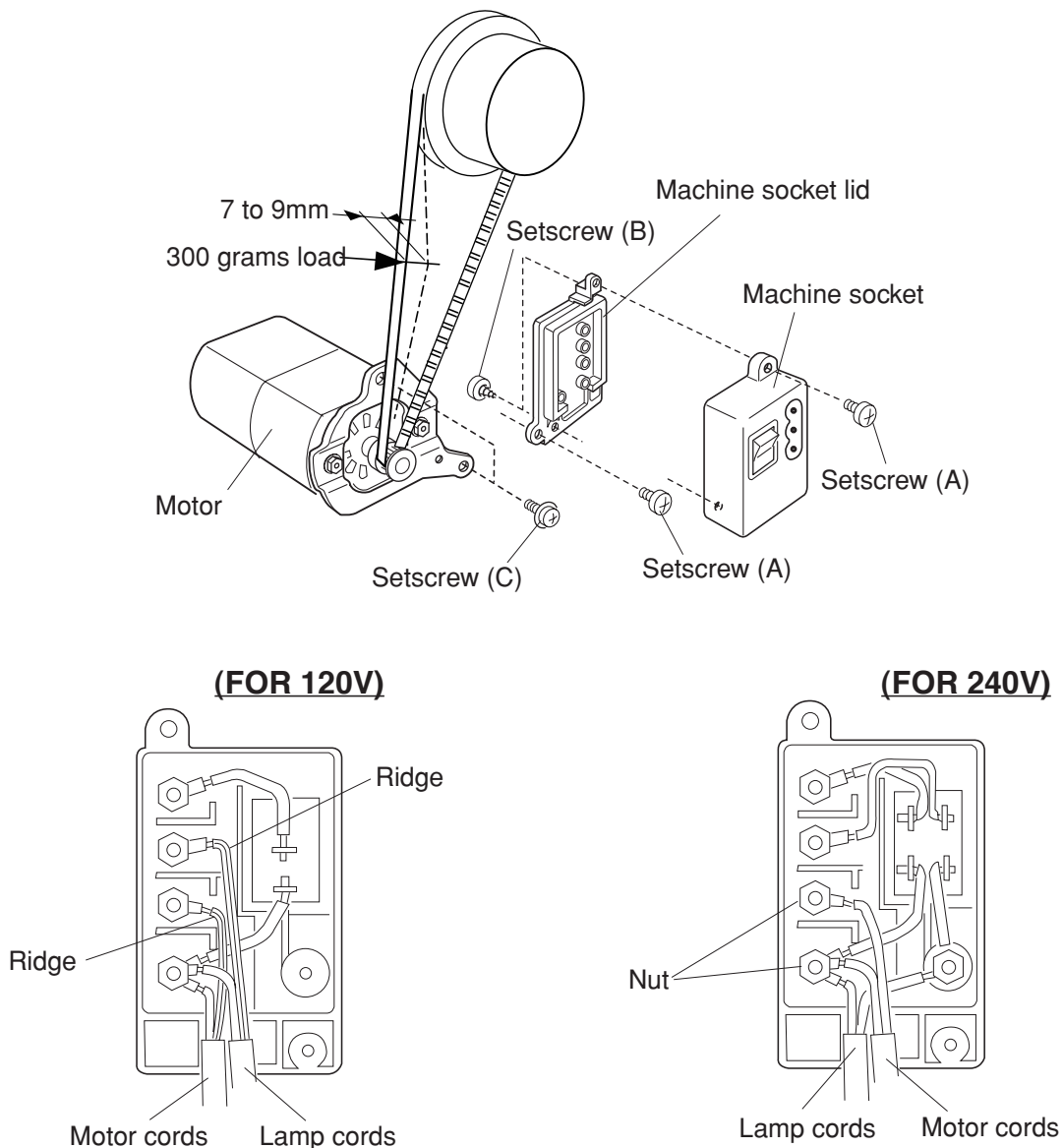
To attach the motor, follow the above procedure in reverse.

<To adjust the motor belt tension>

Slightly loosen the setscrews (C).

While pushing the middle of the motor belt with a 300 grams load, move the motor up or down so that the belt deflects 7 to 9 mm.

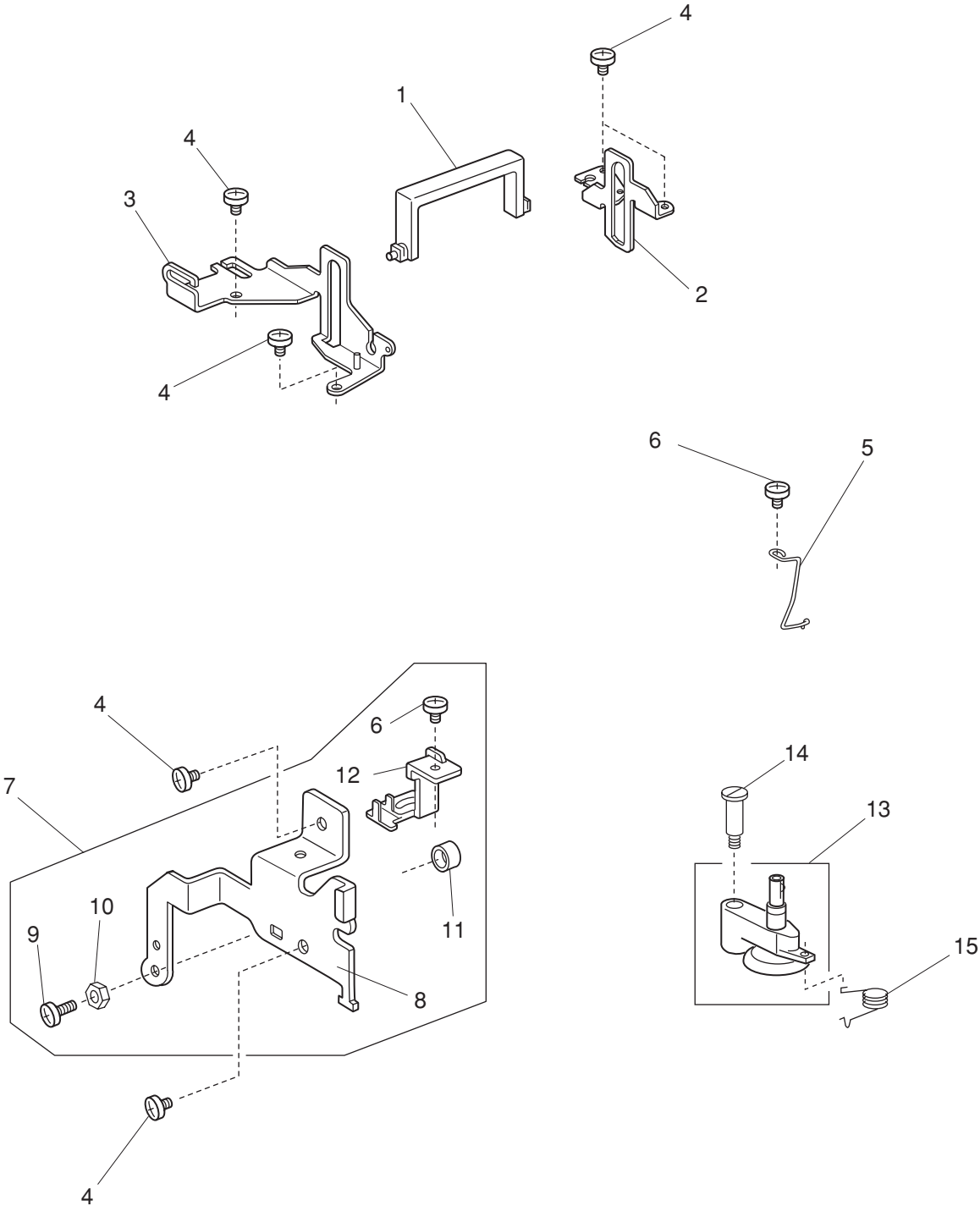
Tighten the setscrews (C) securely.



PARTS LIST

MODEL: Jubilee 60507

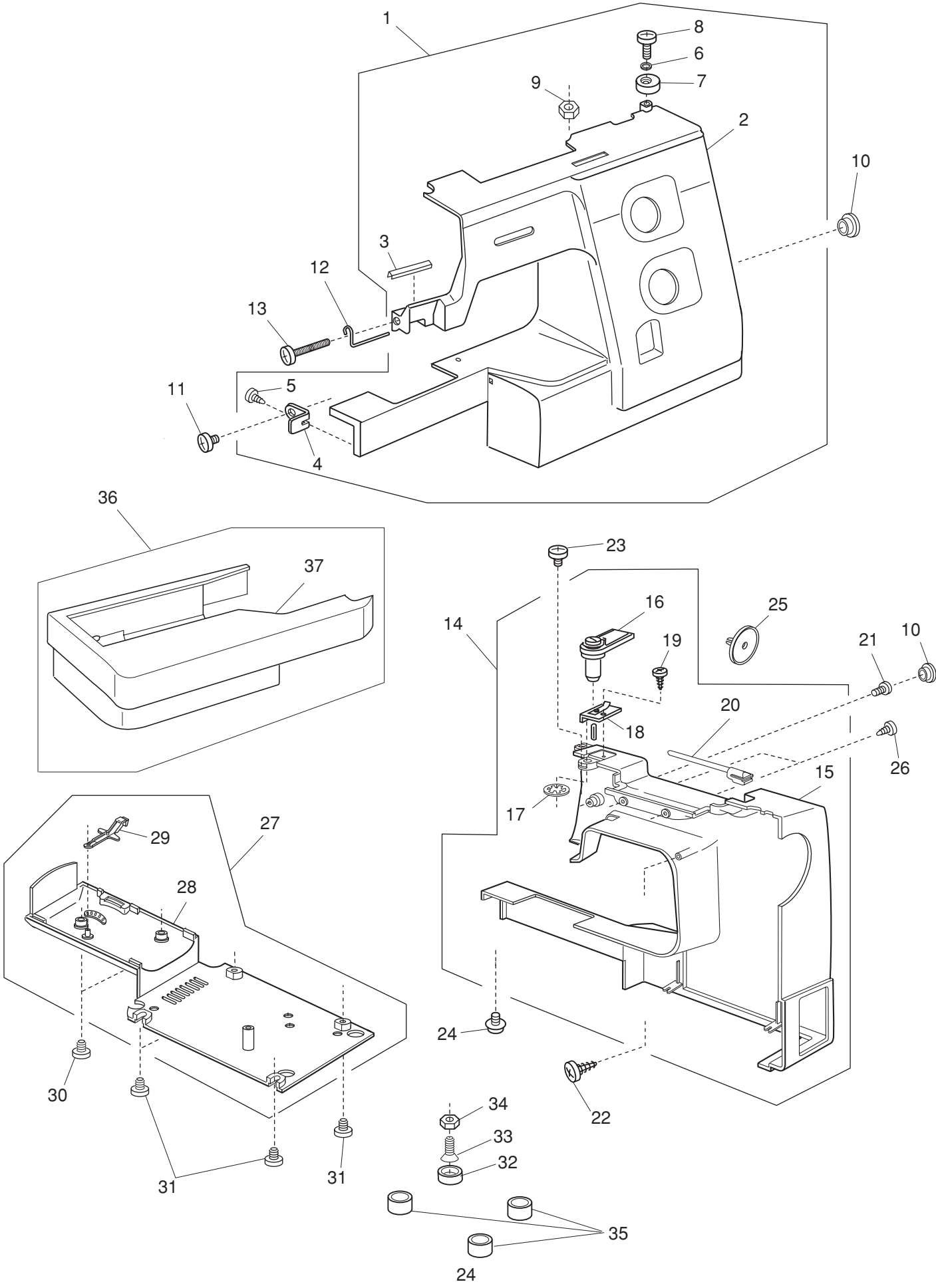
PARTS LIST



PARTS LIST

KEY NO.	PARTS NO.	DESCRIPTION
1	751100000	Handle
2	507150002	Handle supporter (Right)
3	751077029	Handle supporter (Left)
4	000081005	Setscrew 4x8
5	652137006	Arm thread guide (2)
6	000101404	Setscrew 4x6
7	507605100	Face cover bracket (unit)
8	507006105	Face cover bracket
9	000197706	Setscrew 4x20
10	000160102	Adjustable lock nut 4
11	685042005	Needle bar supporter stopper
12	751020027	Needle thread shaft guide
13	652506000	Bobbin winder (unit)
14	652093009	Hinge screw
15	659034003	Bobbin winder spring

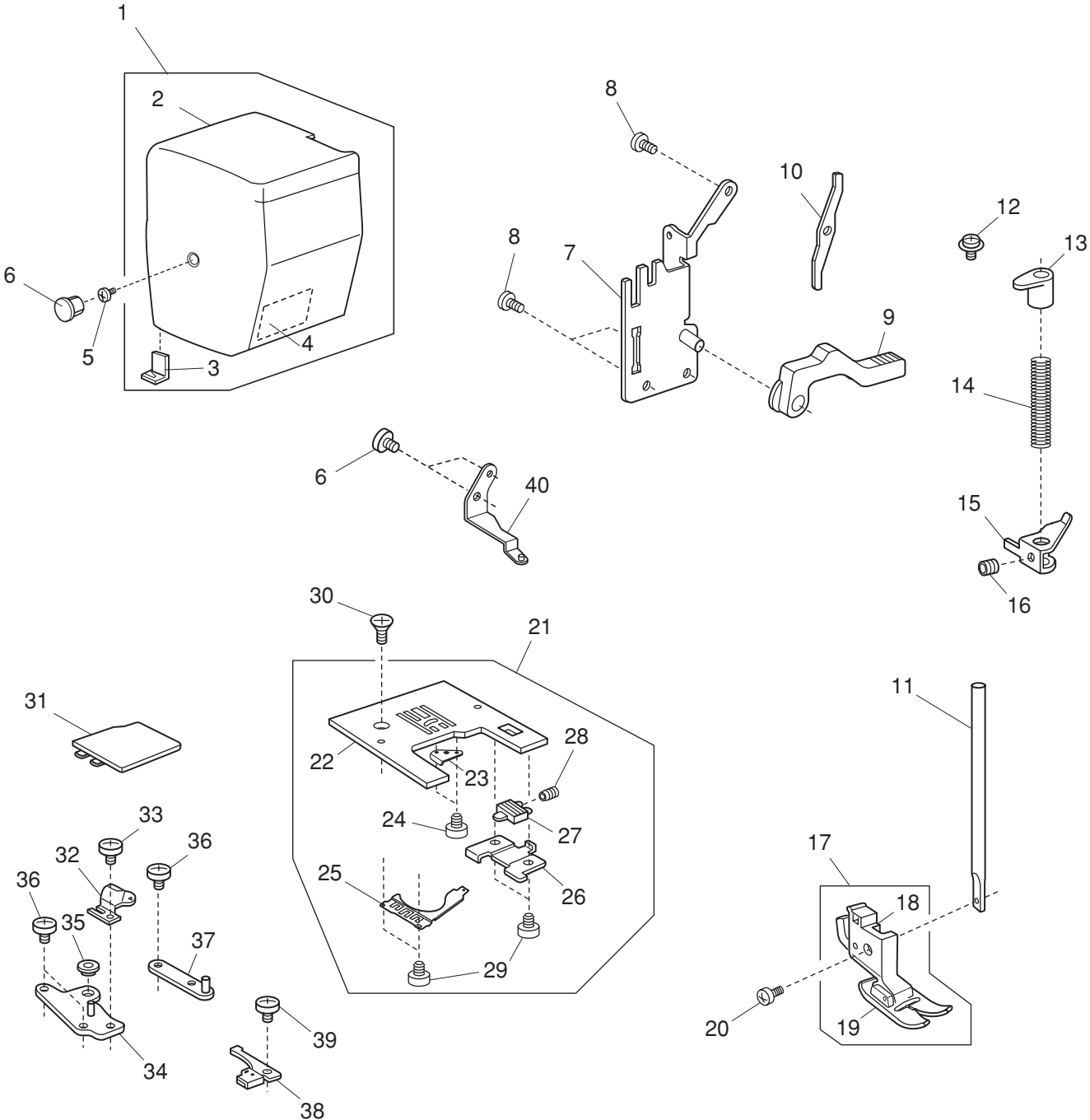
PARTS LIST



PARTS LIST

KEY NO.	PARTS NO.	DESCRIPTION
1	507660608	Front cover (unit)
2	507177164	Front cover
3	753125007	Thread guard
4	827069004	Front cover set plate (Lower)
5	000120203	Setscrew 3x8
6	000071013	Plain washer 4
7	735016307	Bobbin winder stopper
8	000103107	Setscrew 4x14
9	000061205	Hexagonal nut 4-3-7
10	653006101	Cap
11	000101404	Setscrew 4x6
12	753126008	Arm thread guide
13	000092917	Setscrew 3.5x27
14	507631183	Rear cover (unit)
15	507102272	Rear cover
16	650503702	Thread guide (unit)
17	000014409	Snap ring CS-8
18	827503005	Top cover thread guide (unit)
19	000162001	Setscrew 2.6x5
20	659067005	Spool pin
21	000101817	Setscrew 4x16
22	000121905	Setscrew 4x12
23	810220003	Setscrew
24	000115205	Setscrew TP 4x6
25	822020503	Spool holder (Large)
26	000161310	Setscrew 3x12
27	507601003	Base cover (unit)
28	507001007	Base cover
29	753005000	Drop feed lever
30	000101703	Setscrew 4x12
31	000103509	Setscrew 4x10
32	735002001	Rubber foot
33	000097808	Flat screw 5x25
34	000061412	Hexagonal nut 5-3-8
35	647009002	Rubber foot base
36	507637606	Extension table (unit)
37	507503004	Extension table (unit)

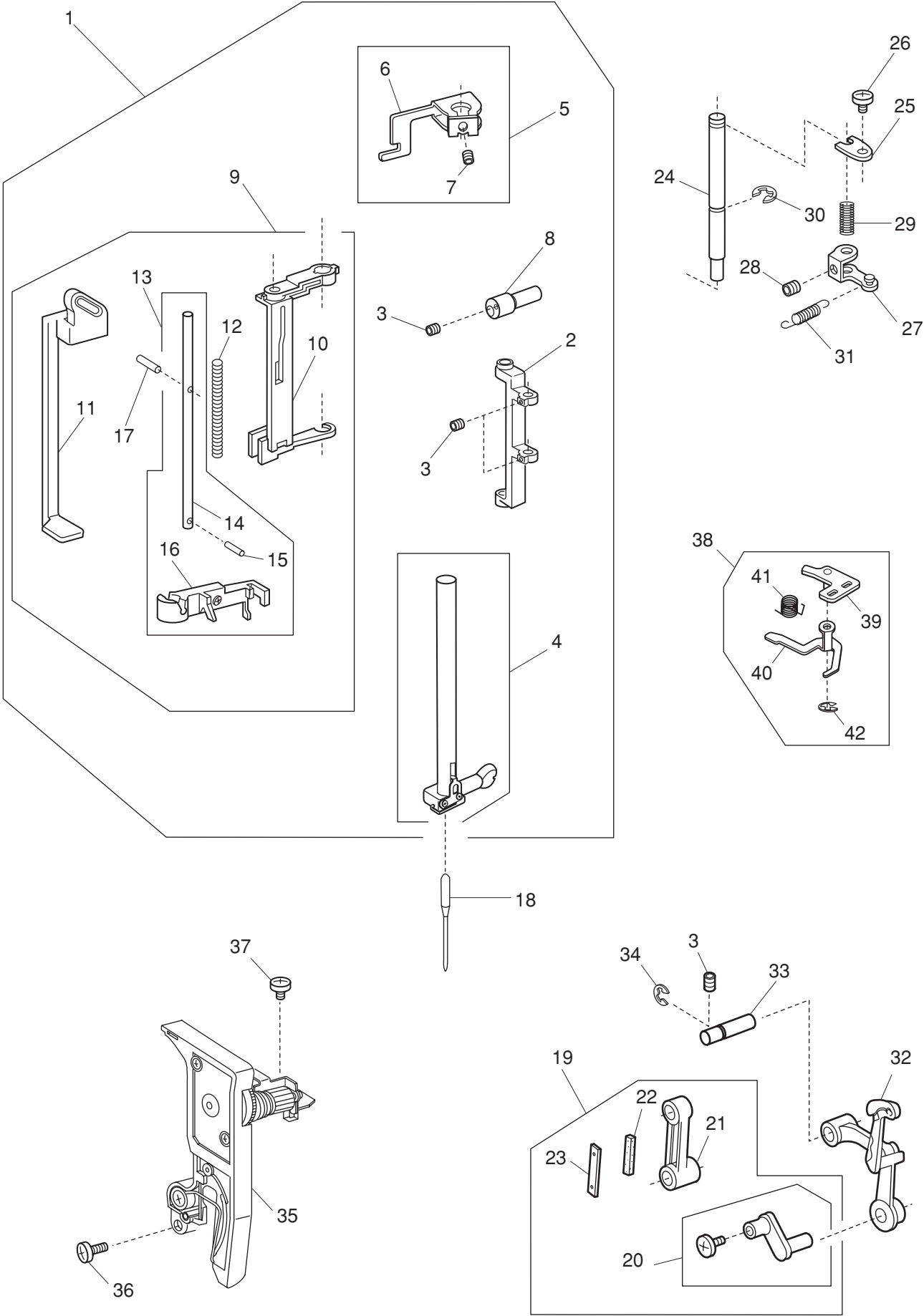
PARTS LIST



PARTS LIST

KEY NO.	PARTS NO.	DESCRIPTION
1	507661067	Face plate (unit)
2	507178501	Face plate
3	840602006	Thread cutter (unit)
4	724025006	Reflector sticker (2)
5	000101703	Setscrew 4x12
6	653006101	Cap
7	507156008	Presser bar bracket
8	000081005	Setscrew 4x8
9	735029004	Presser foot lifter
10	751142004	Tension release lever
11	827021004	Presser bar
12	000193001	Setscrew TP 4x6
13	652104004	Presser bar bushing
14	651014003	Presser spring
15	735028003	Presser bar supporter
16	000111500	Hexagonal socket screw 4x8
17	660508007	Presser foot (unit)
18	660806008	Presser foot holder (unit)
19	685502019	Zigzag foot
20	660106001	Thumbscrew
21	751603400	Needle plate (unit)
22	653179003	Needle plate
23	654078004	Bobbin holder set plate
24	820373003	Setscrew 2x3
25	832235010	Hook cover set plate (Left)
26	825015010	Hook cover set plate (Right)
27	825016000	Hook cover release button
28	825017001	Hook cover release button spring
29	820374004	Setscrew 2x2.3
30	820390109	Setscrew
31	750036012	Hook cover plate
32	822011109	Reverse stopper
33	000103808	Setscrew 3x5
34	751008007	Needle plate adjusting plate (Left)
35	822314002	Nut
36	000066705	Setscrew 3x8
37	751009008	Needle plate adjusting plate (Right)
38	751502109	Stopper (unit)
39	810220003	Setscrew
40	755076008	Threader guide

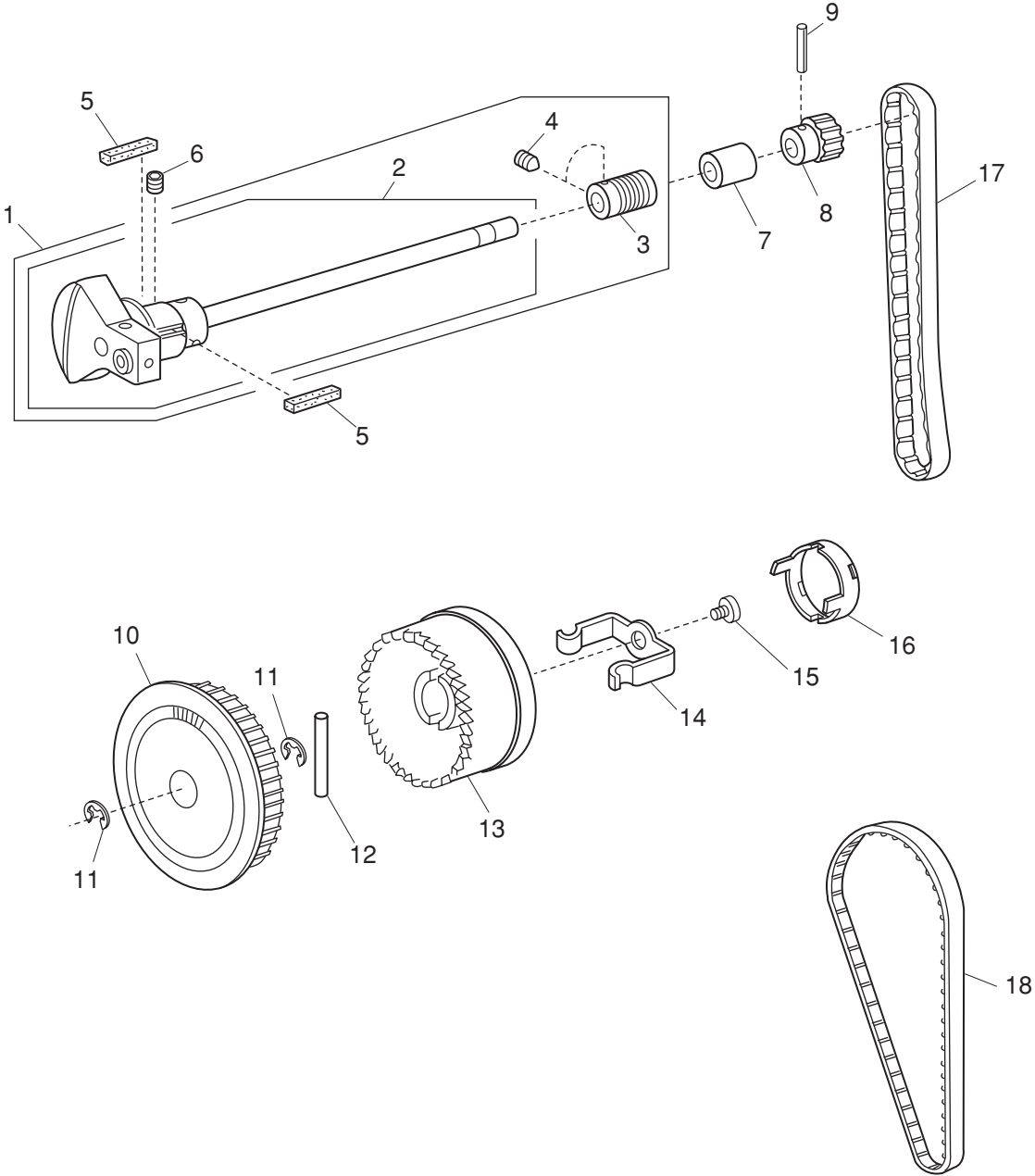
PARTS LIST



PARTS LIST

KEY NO.	PARTS NO.	DESCRIPTION
1	755627103	Needle bar supporter (unit)
2	751014006	Needle bar supporter
3	000111201	Hexagonal socket screw 4x4
4	751630015	Needle bar (unit)
5	807607019	Threader positioning setting plate (unit)
6	807018109	Threader positioning setting plate
7	000111902	Hexagonal socket screw 3x4
8	751047008	Needle bar connecting stud
9	853509002	Needle threader (unit)
10	755062001	Threader frame
11	853026000	Threader lever
12	755067006	Needle threader spring
13	755625008	Threader shaft (unit)
14	755066005	Threader shaft
15	000003508	Knock pin 2x8
16	755643002	Threader plate (unit)
17	000125105	Pin E2x16-CH
18	102408089	Needle HA1-14
19	846615000	Needle bar crank rod (unit)
20	652512009	Needle bar crank pin (unit)
21	650039001	Needle bar crank rod
22	650040005	Felt
23	650041006	Felt holder
24	650033005	Needle bar supporter shaft
25	650034006	Needle bar supporter shaft set plate
26	000101404	Setscrew 4x6
27	650035007	Zigzag width crank
28	000111108	Hexagonal socket screw 4x6
29	650036008	Needle bar supporter shaft spring
30	000001609	Snap ring E-5
31	507094007	Needle bar supporter spring
32	820511108	Thread take-up lever (unit)
33	650062003	Thread take-up lever shaft
34	000002806	Snap ring E-6
35	507504809	Tension regulator (unit)
36	000101703	Setscrew 4x12
37	000115205	TP screw 4x6
38	507638009	Tension release arm (unit)
39	752055002	Tension release arm plate
40	751215009	Tension release arm
41	752056003	Tension release spring
42	000002105	Snap ring E-3

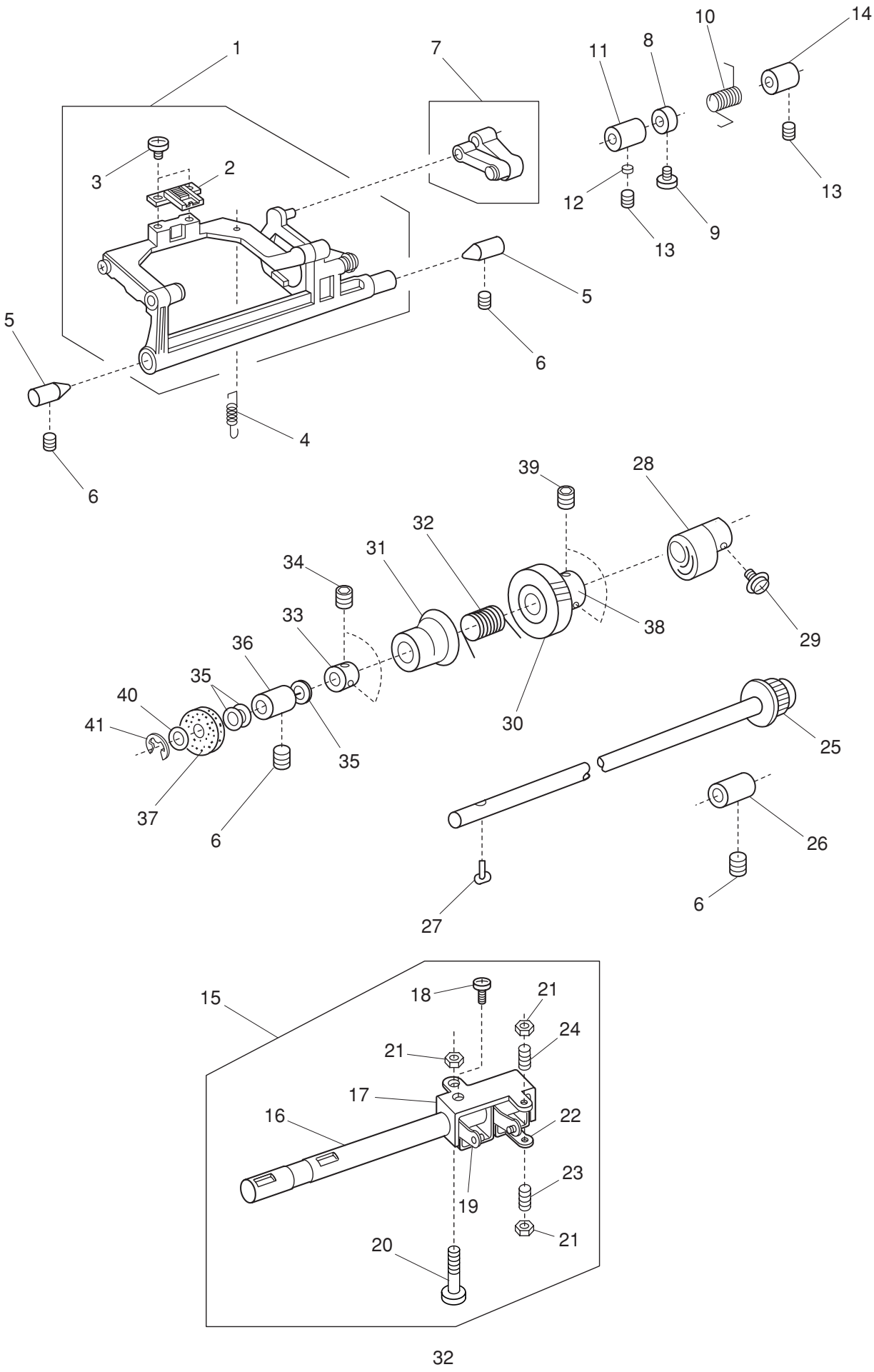
PARTS LIST



PARTS LIST

KEY NO.	PARTS NO.	DESCRIPTION
1	756607100	Upper shaft (unit)
2	756504003	Upper shaft (unit)
3	507059000	Worm
4	000111201	Hexagonal socket screw 4x4
5	731384008	Felt
6	000111304	Hexagonal socket screw 5x5
7	673062004	Upper shaft rear bushing
8	756017004	Upper shaft timing gear
9	000020501	Spring pin 3x22
10	756018005	Belt wheel
11	000030205	Snap ring E-8
12	000023803	Spring pin 4x40
13	639097703	Handwheel
14	639113016	Clutch spring
15	000081005	Setscrew 4x8
16	650070048	Handwheel cap
17	650071016	Timing belt
18	653139023	Timing belt

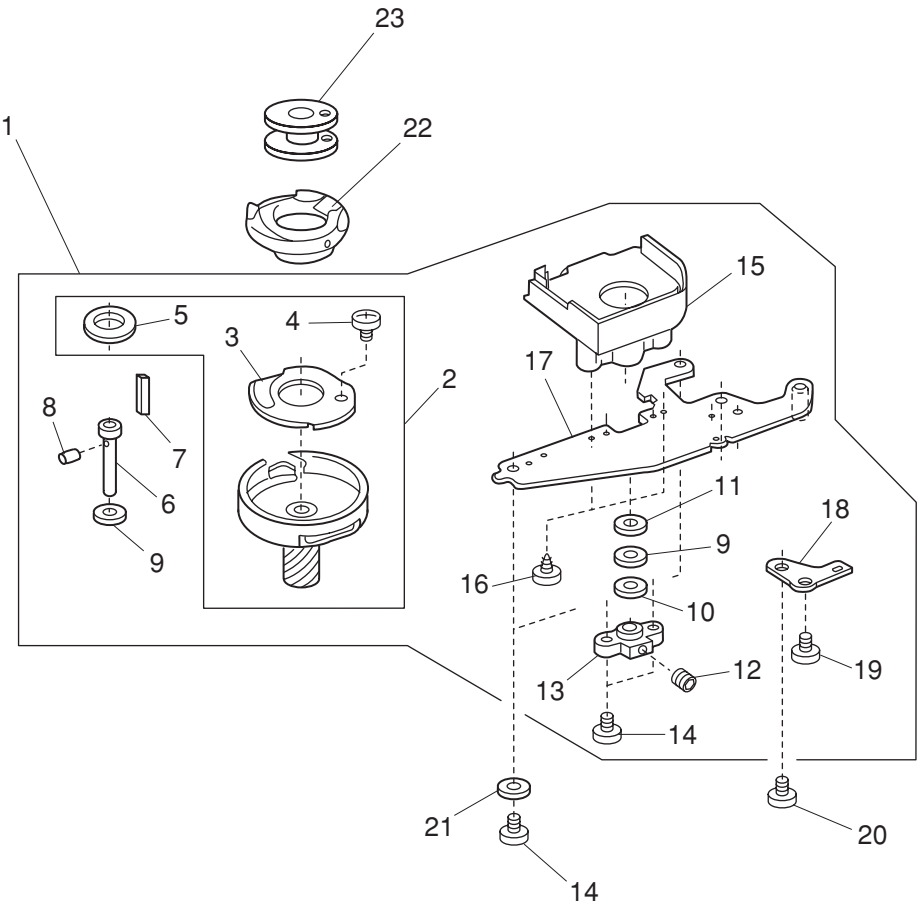
PARTS LIST



PARTS LIST

KEY NO.	PARTS NO.	DESCRIPTION
1	751666504	Feed rock shaft (unit)
2	653193003	Feed dog
3	000104005	Setscrew 3.5x8
4	650085002	Spring
5	738055008	Straight pin
6	000111304	Hexagonal socket screw 5x5
7	650612004	Feed regulator (unit)
8	820387000	Ring
9	000081005	Setscrew 4x8
10	507095008	Regulator spring
11	625144002	Feed shaft bushing (Front)
12	650175000	Cushion
13	000111201	Hexagonal socket screw 4x4
14	650092002	Feed shaft bushing (Rear)
15	507608103	Feed regulator plate (unit)
16	507062006	Feed shaft
17	507011103	Feed shaft plate
18	000081500	Setscrew 3x12
19	507064101	SS adjusting plate
20	507087007	Adjusting screw
21	000160102	Adjustable lock nut 4
22	507063007	Feed adjusting plate
23	648010009	Setscrew
24	000159201	Setscrew 4x12
25	751612206	Lower shaft (unit)
26	650079003	Lower shaft bushing (Rear)
27	820161006	Feed lifting cam pin
28	751148000	Feed cam
29	000115009	TP screw 3x8
30	508023008	Lower shaft gear
31	753183025	Feed lifting cam
32	686035008	Feed lifting cam spring
33	820166001	Lower shaft ring
34	000111201	Hexagonal socket screw 4x4
35	000038502	Thrust washer $\varnothing 8 \times 0.5$
36	650078002	Lower shaft bushing (Front)
37	735143005	Felt
38	508020005	Ring
39	000111108	Hexagonal socket screw 4x6
40	858177002	Washer
41	000002806	Snap ring E-6

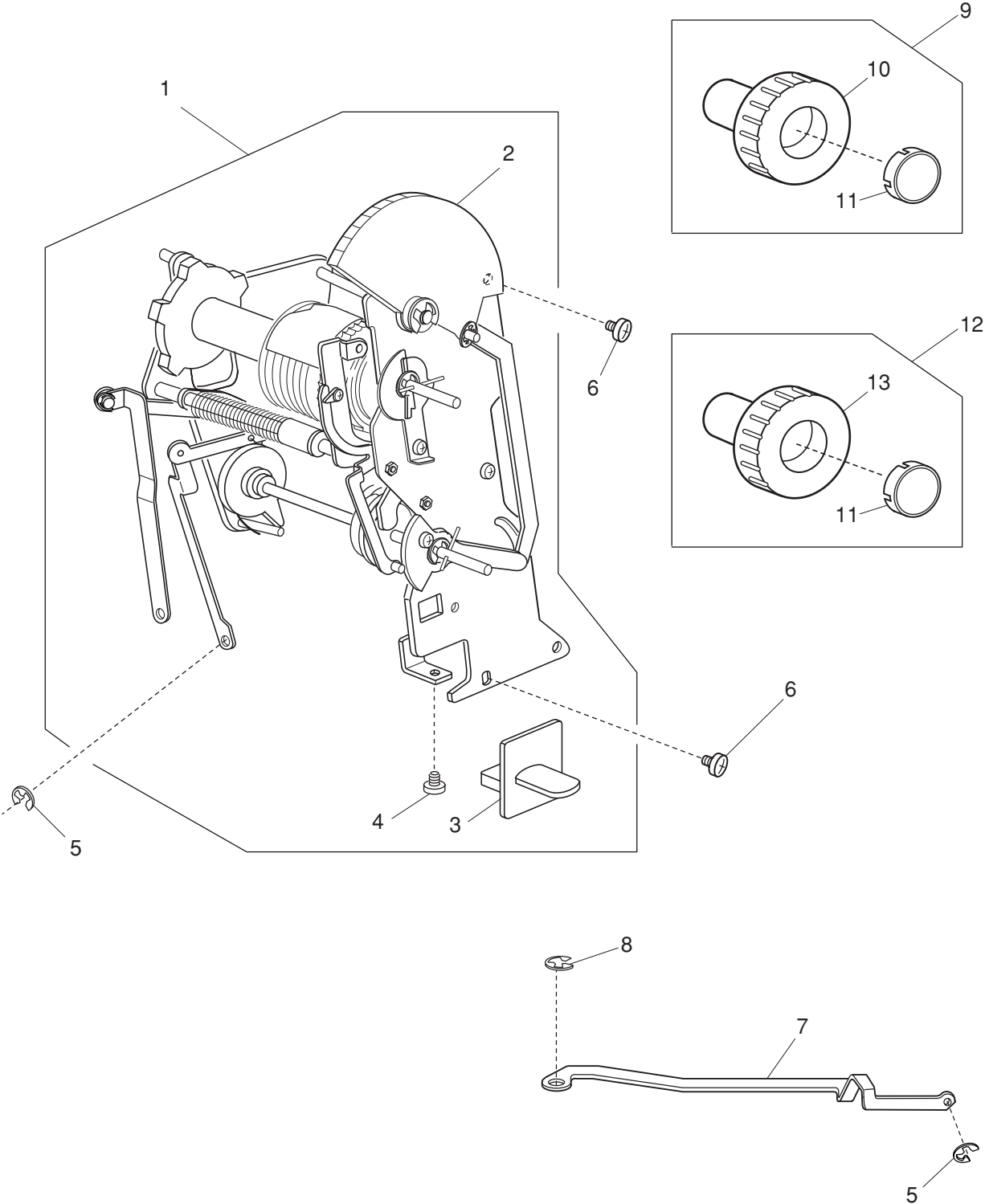
PARTS LIST



PARTS LIST

KEY NO.	PARTS NO.	DESCRIPTION
1	660655011	Hook (unit)
2	660536004	Hook body (unit)
3	508137006	Hook race bottom plate
4	820374004	Setscrew 2x2.3
5	627190010	Hook race magnet
6	820123006	Hook driver shaft
7	820124007	Hook shaft oil felt (1)
8	820125008	Hook shaft oil felt (2)
9	000038409	Thrust washer
10	625102008	Plain washer
11	627192001	Washer
12	000111304	Hexagonal socket screw 5x5
13	650094004	Hook shaft base
14	000081005	Setscrew 4x8
15	827040009	Hook gear cover
16	000107204	Setscrew 3x12 (B)
17	823106002	Hook base plate
18	650171006	Positioning plate
19	000101404	Setscrew 4x6
20	650172007	Hinge screw
21	000070506	Plain washer
22	627569106	Bobbin holder (unit)
23	102261402	Bobbin

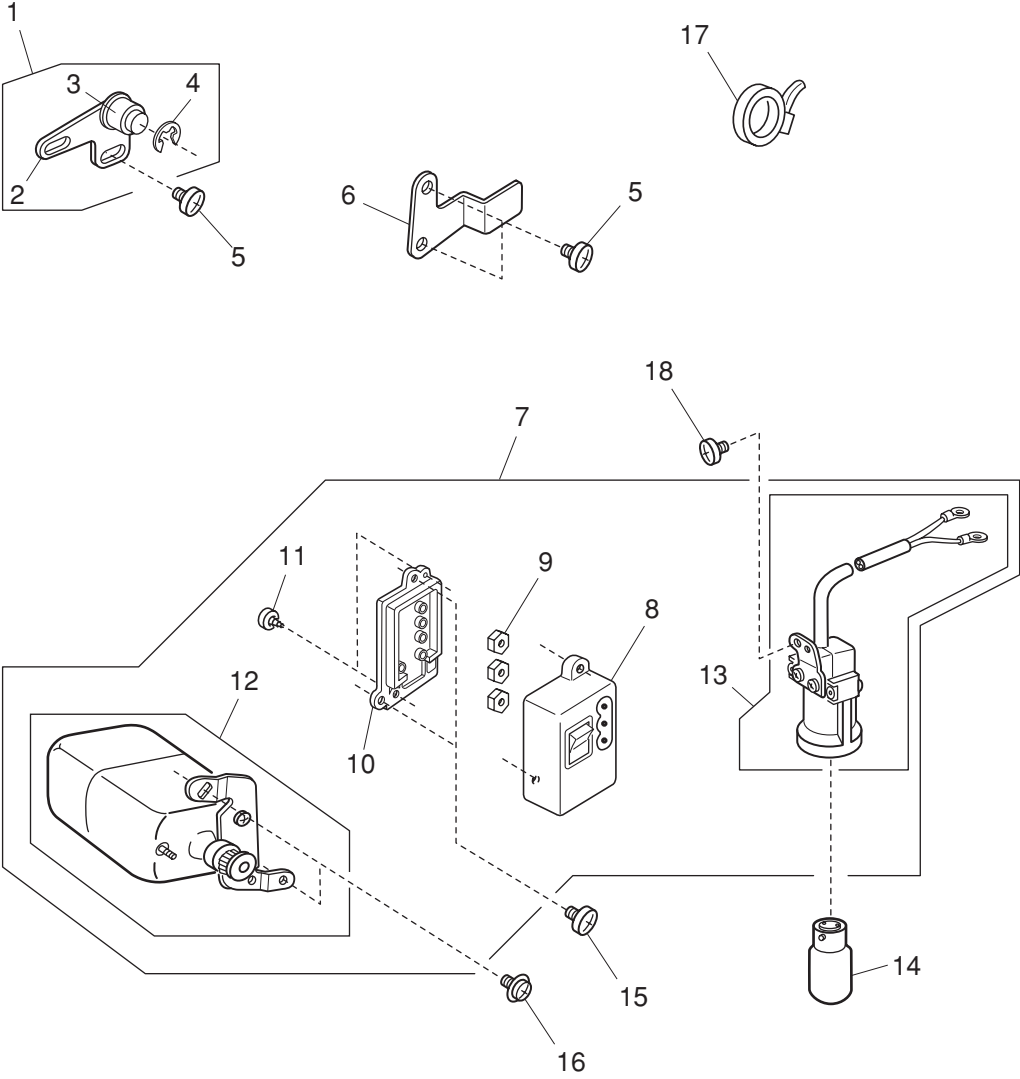
PARTS LIST



PARTS LIST

KEY NO.	PARTS NO.	DESCRIPTION
1	507633406	Cam block (unit)
2	507041607	Stitch width dial
3	507109132	R lever
4	000107307	Set screw 3x8
5	000002105	Snap ring E-3
6	000081005	Setscrew 4x8
7	507066000	Zigzag width rod
8	000002507	Snap ring E-4
9	507635486	Pattern selector dial (unit)
10	507112611	Pattern selector dial
11	507113003	Cap
12	507635475	Stitch length dial (unit)
13	507112622	Stitch length dial

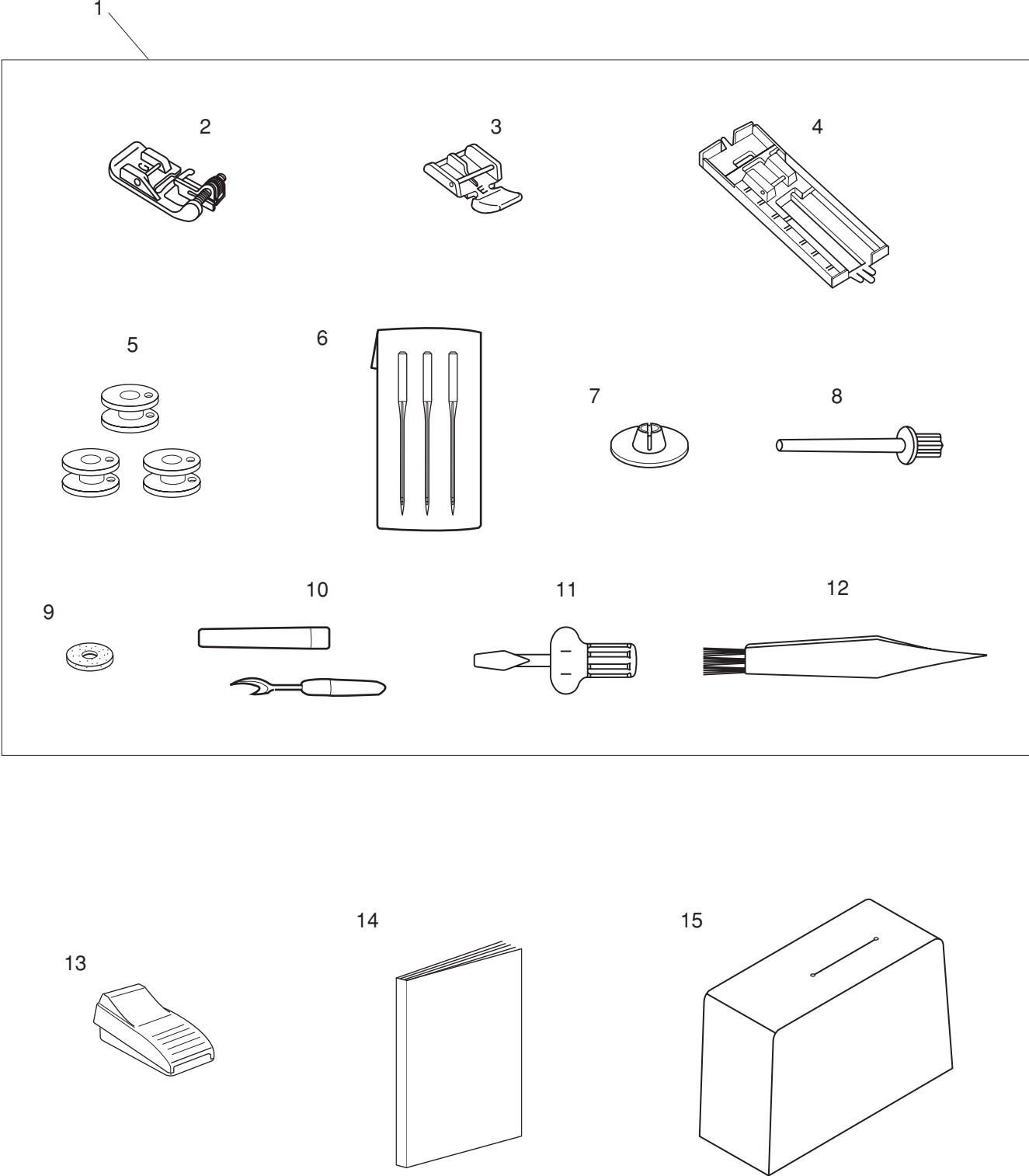
PARTS LIST



PARTS LIST

KEY NO.	PARTS NO.	DESCRIPTION
1	753619003	Idler (unit)
2	753119008	Idler base
3	625217100	Idler
4	000002806	Snap ring E-6
5	000081005	Setscrew 4x8
6	507067001	Machine socket bracket
7	507668204	Machine socket (unit)
8	739503308	Machine socket (unit)
9	000060802	Hexagonal nut 3-1-5.5
10	505064002	Machine socket lid
11	000107802	Setscrew 3x10
12	752671000	Motor (unit)
13	507611006	Lamp socket (unit)
14	000009009	Lamp 240V 15W
15	000103509	Setscrew 4x10
16	000115504	Setscrew TP 5x10
17	000053709	Cord binder
18	000101404	Setscrew 4x6

PARTS LIST



PARTS LIST

KEY NO.	PARTS NO.	DESCRIPTION
1	507870083	Accessory set
2	820817015	Blind stitch foot
3	829801002	Zipper foot
4	825813016	Buttonhole foot
5	102261402	Bobbin
6	639804000	Needle set
7	822019509	Spool holder (Small)
8	625031500	Extra spool pin (2)
9	102403109	Felt
10	647808009	Seam ripper
11	820832005	Screwdriver
12	802424004	Lint brush
13	C-2040-1	Foot control
14	507850238	Instruction book
15	507818005	Cover